

THURSDAY

AGENDA

- Bell Work
- Read and Annotate "What Happened During the Ice Storm".
- T-Chart
- Exit Ticket

ATTENDANCE

DO YOU WORK
BETTER IN THE
MORNING OR THE
EVENING?

DUE

Sentence
Expansions- DUE
NOW
Bell Work - Friday

MATERIALS

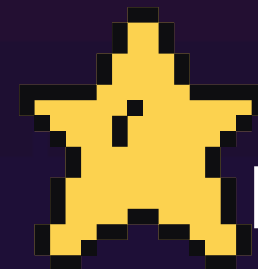
-  Txt Book
-  Highlighter
-  Paper and pencil

OBJECTIVES

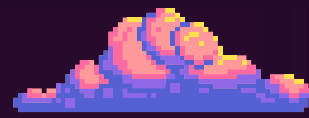
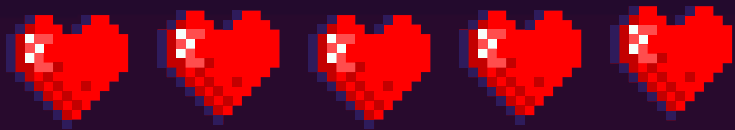
- Analyze how the setting of a short story influences its theme.
- Analyze how suspense is built over the course of a story.
- Consider details that show how characters change.



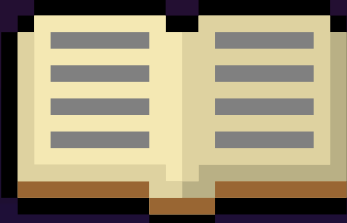
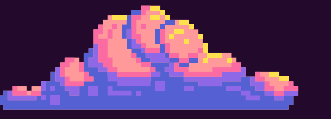
REMINDERS



SENTENCE EXPANSION
HOMEWORK IS DUE RIGHT
NOW!!!!!!

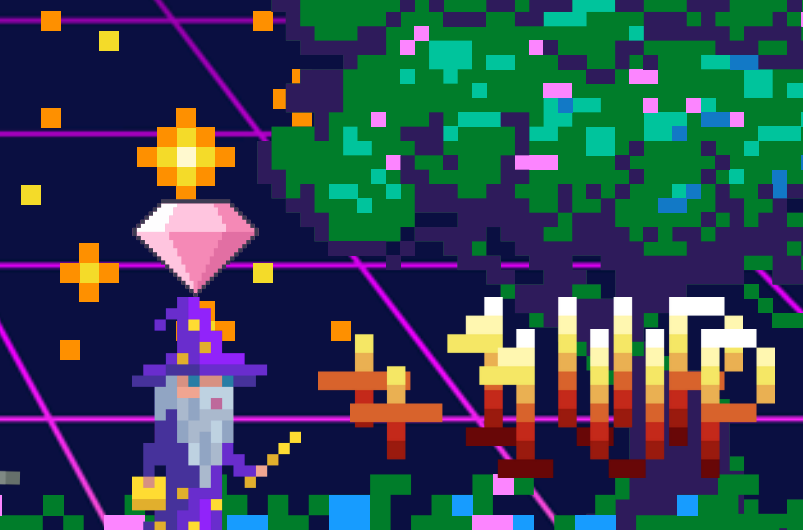
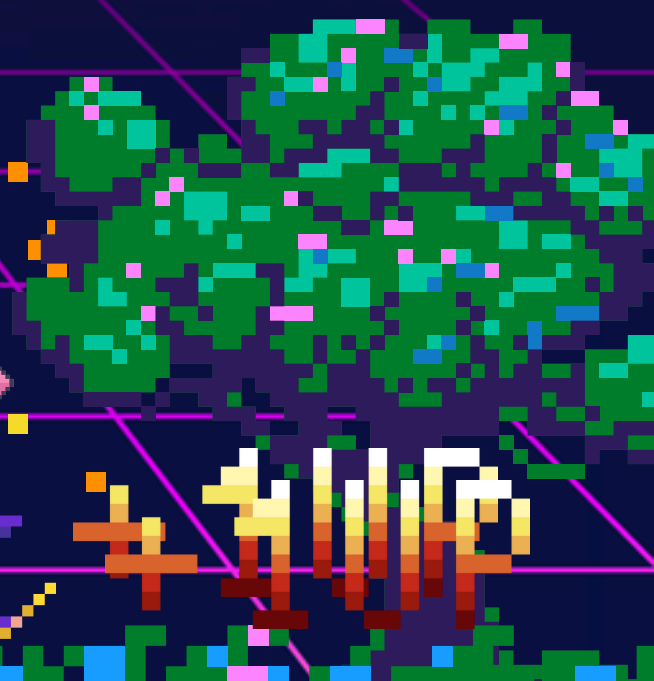
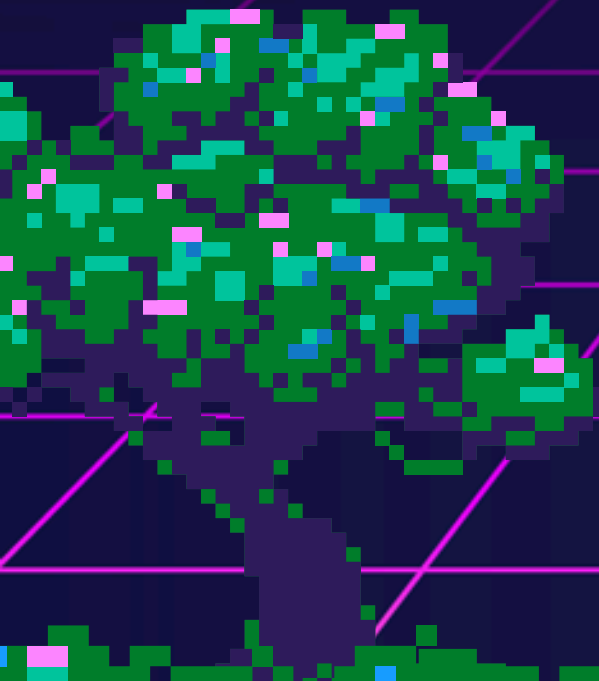


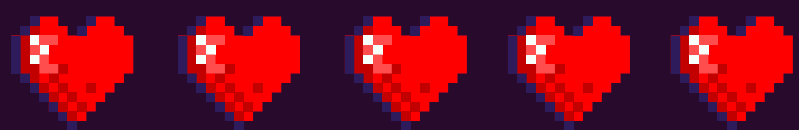
BELL WORK



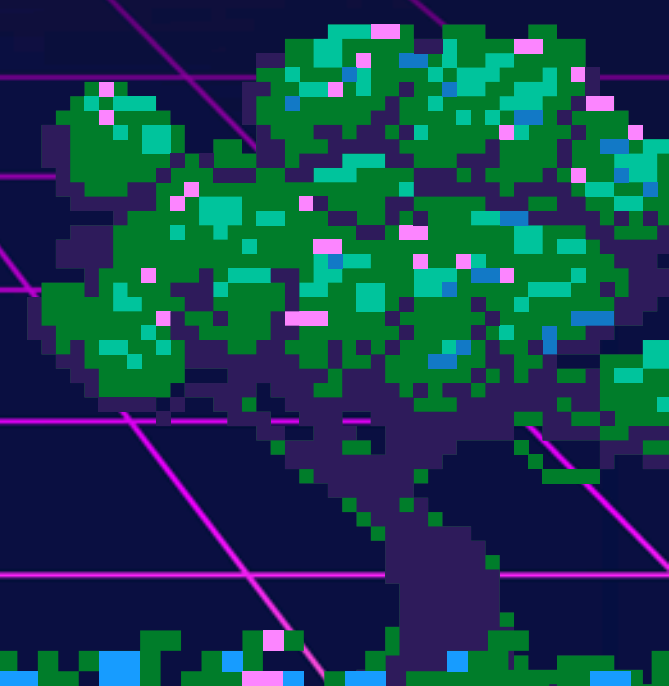
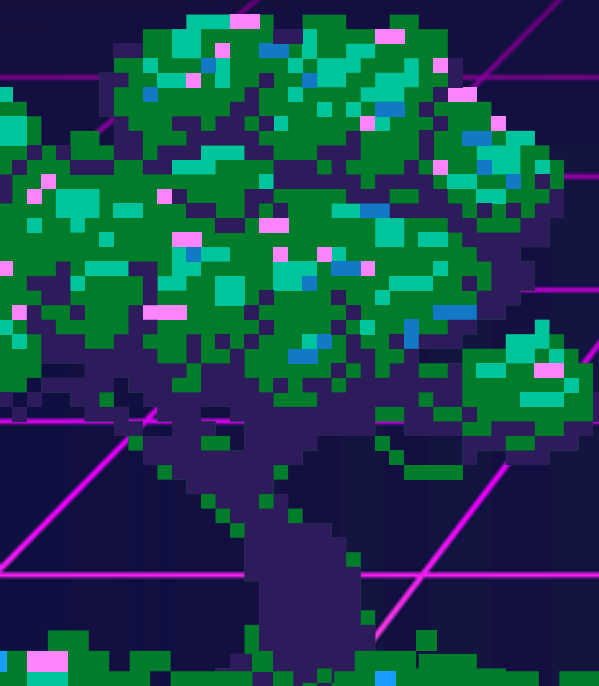
ADD DETAILS PERTAINING TO WHO, WHAT, WHERE, WHY, AND WHEN TO ADD MORE DETAIL TO THESE SIMPLE DECLARATIVE SENTENCES.

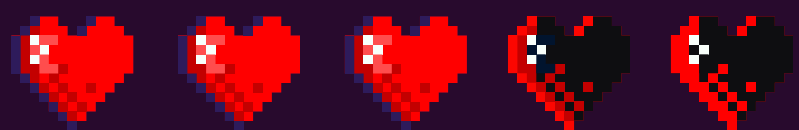
- KENLEY WAS GOOD AT THAT.
- JAYBIRD IS DOING THIS.
- SHE FLEW.
- IT CRIED.
- FREEMAN LISTENED.



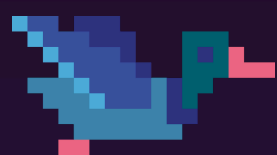


PAGE 33





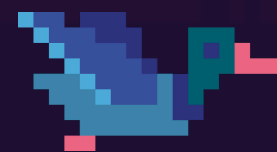
ANNOTATE



QUESTION

INTERPRETATIONS

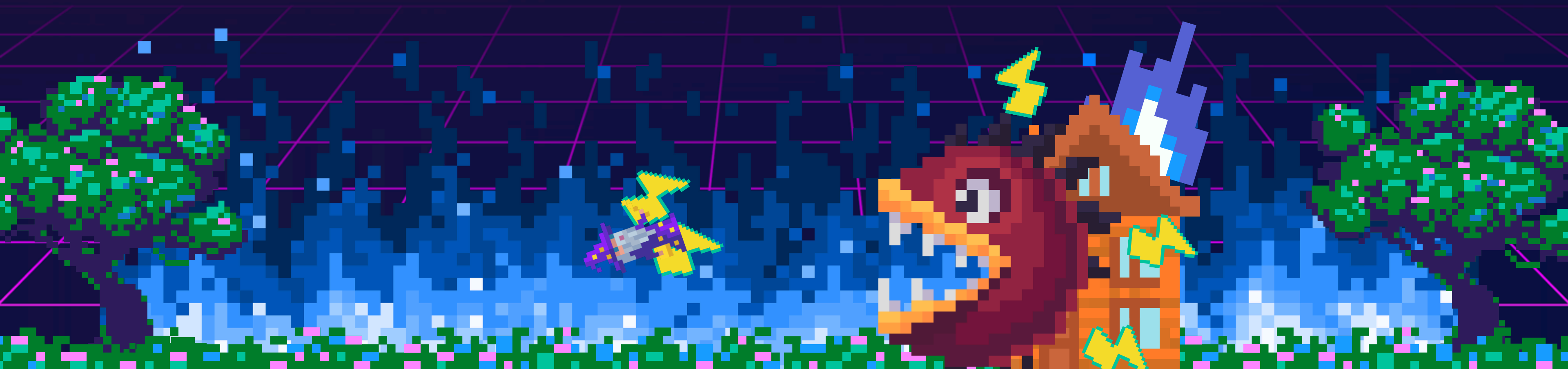
CONNECTION

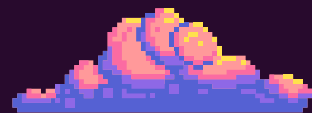


SUMMARIZE

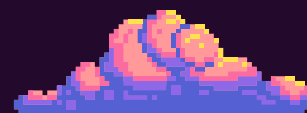
WORDS

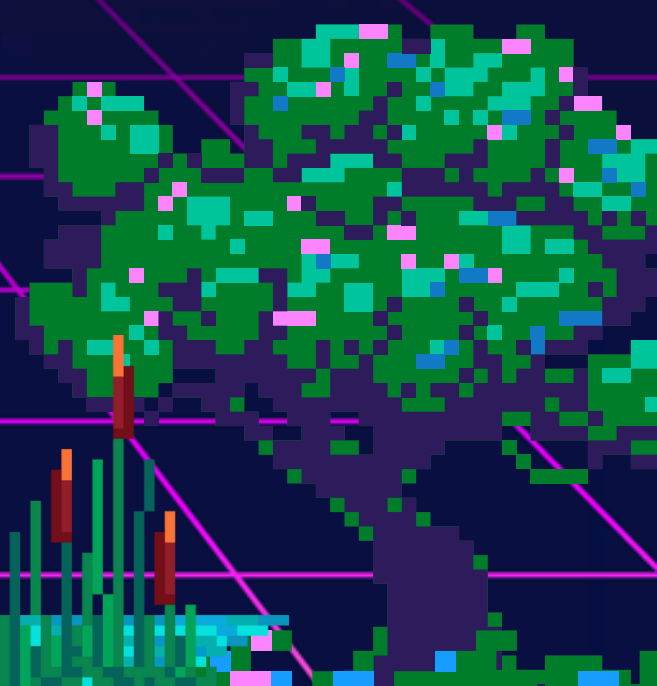
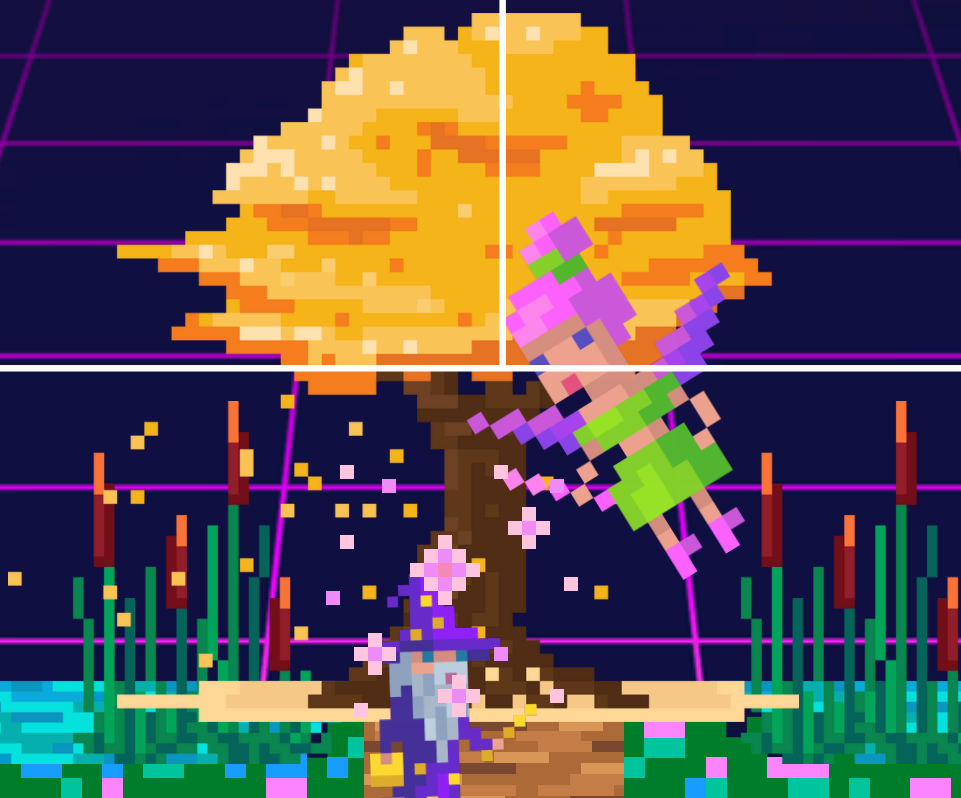
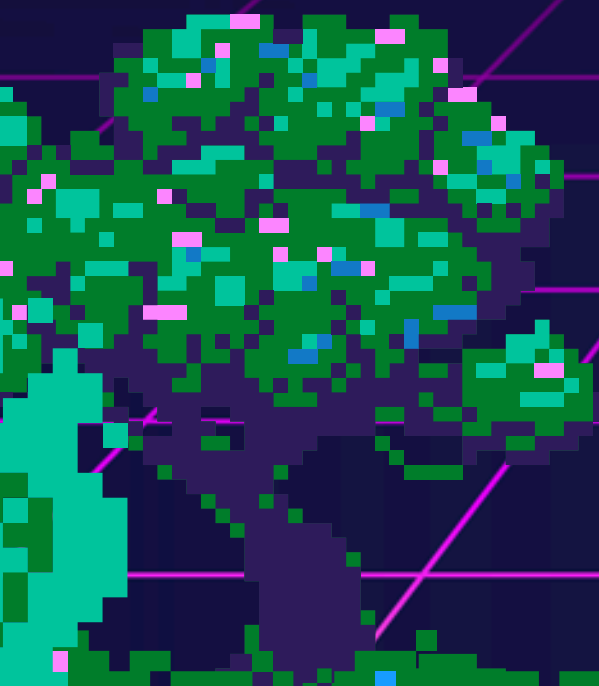
PATTERNS

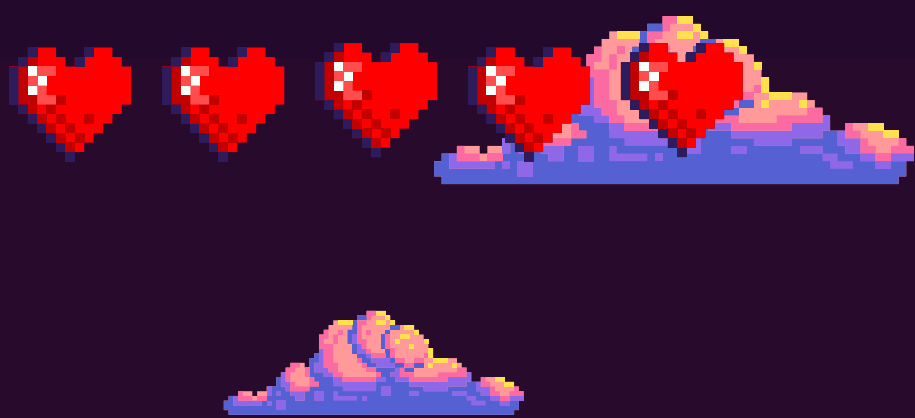




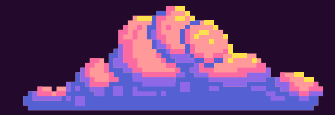
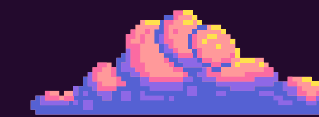
MAKE A T- CHART





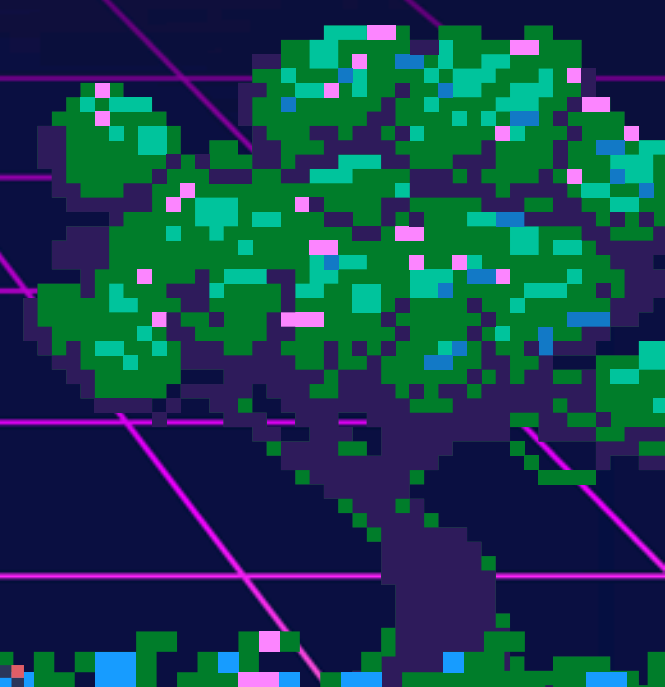
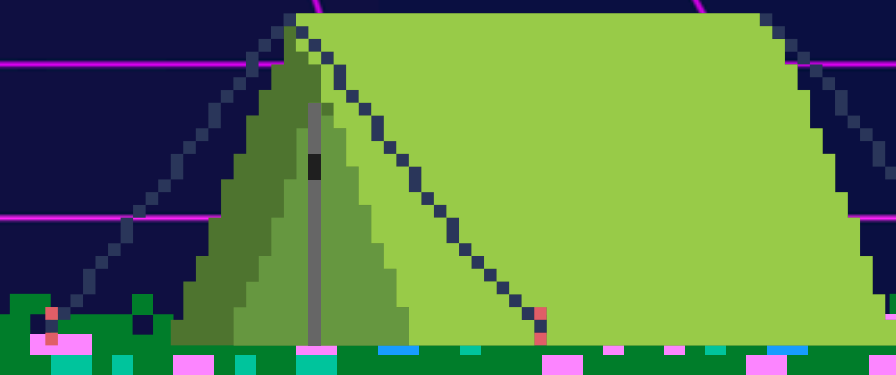
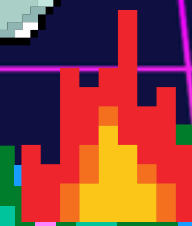
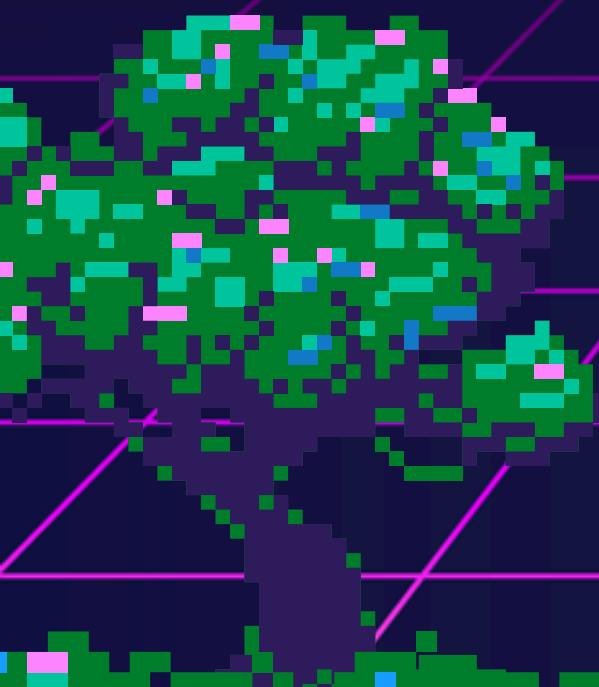


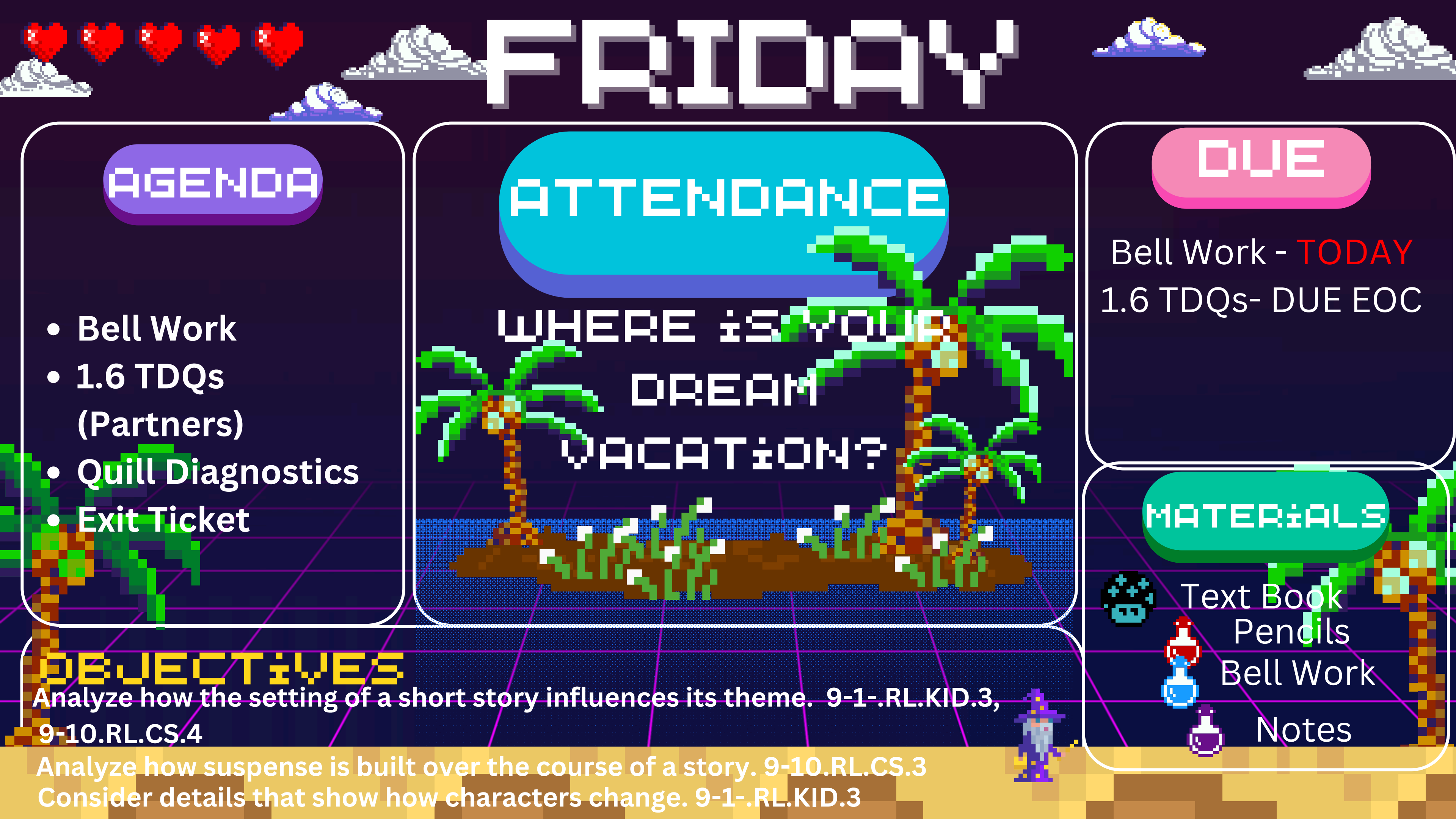
EXIT TICKET



ON YOUR POST-IT, RESPOND
TO THIS QUESTION. THEN
PARK IT.

What details from “What Happened
During the Ice Storm” convey a
change in character of the young
boys from the beginning to the
end?





FRIDAY

AGENDA

- Bell Work
- 1.6 TDQs (Partners)
- Quill Diagnostics
- Exit Ticket

ATTENDANCE

WHERE IS YOUR
DREAM
VACATION?

DUE

Bell Work - **TODAY**
1.6 TDQs- DUE EOC

MATERIALS



Text Book
Pencils
Bell Work
Notes



OBJECTIVES

Analyze how the setting of a short story influences its theme. 9-1-.RL.KID.3,
9-10.RL.CS.4

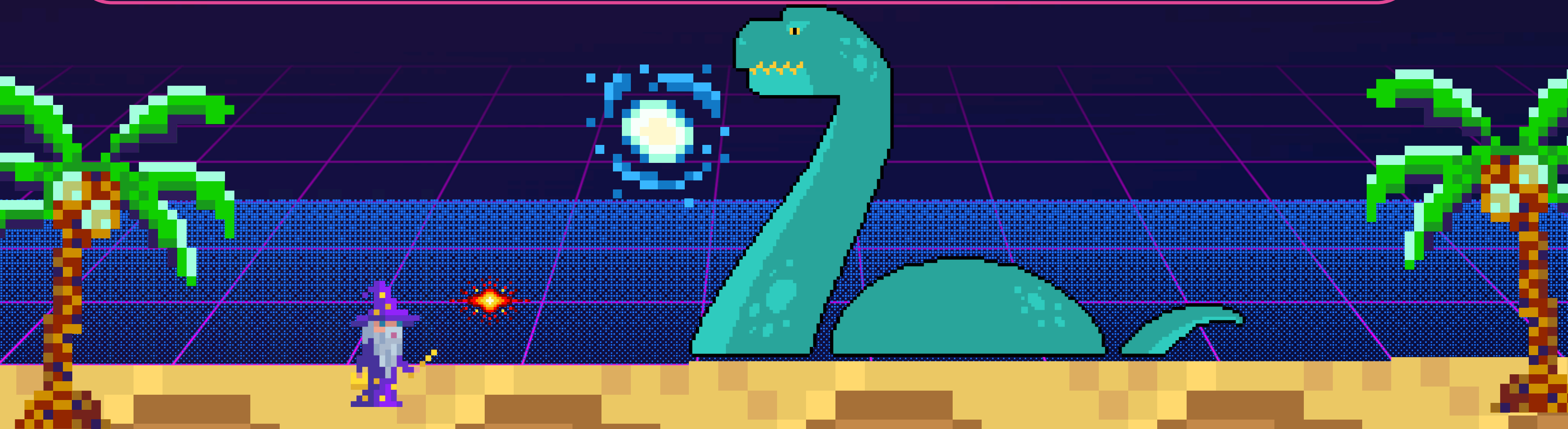
Analyze how suspense is built over the course of a story. 9-10.RL.CS.3
Consider details that show how characters change. 9-1-.RL.KID.3

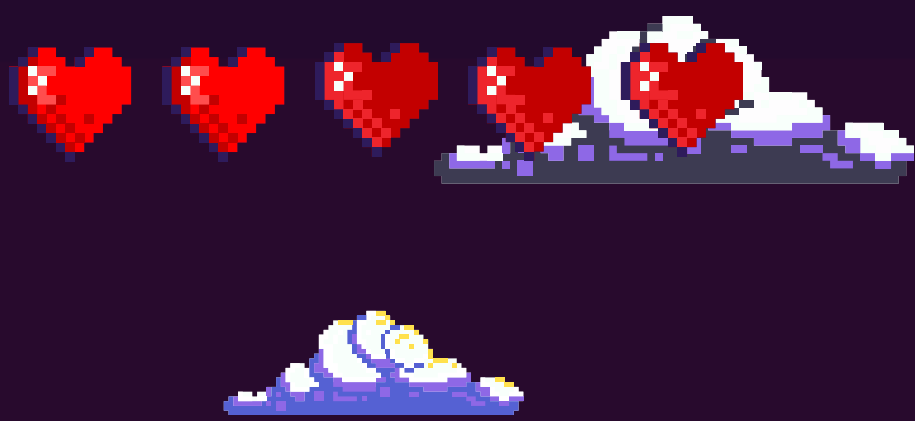


BELL WORK

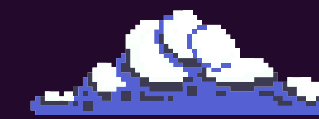
What specific details from “What Happened During the Ice Storm” convey a change in character of the young boys from the beginning to the end?

USE YOUR BOOK





QUESTIONS 1-5



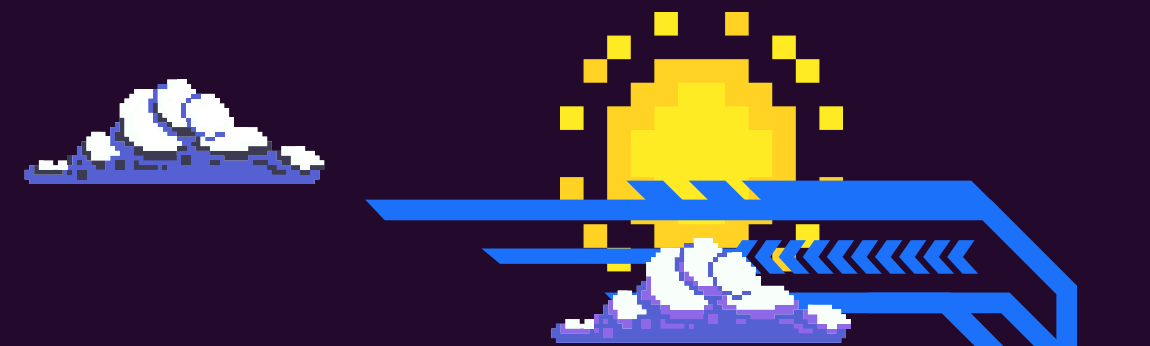
With a partnero craft an answer using text evidence in a Complete sentence.

Ex: The author shows how the boys develop empathy for the pheasants by demonstrating tht the boys now felt " the rain soaking through their shirts" and "the ice clinging to their skin" (Keynen 4).

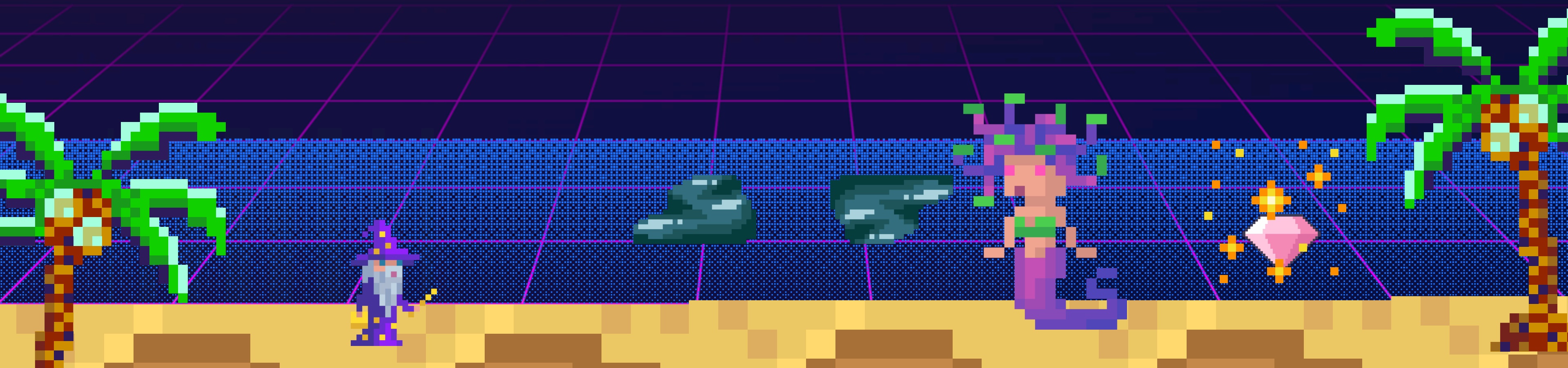


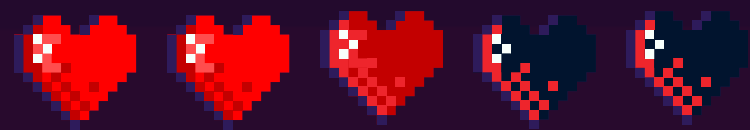


SUSPENCE



Building suspense involves withholding information and raising key questions that pique readers' curiosity. Character development plays a big role in generating suspense.



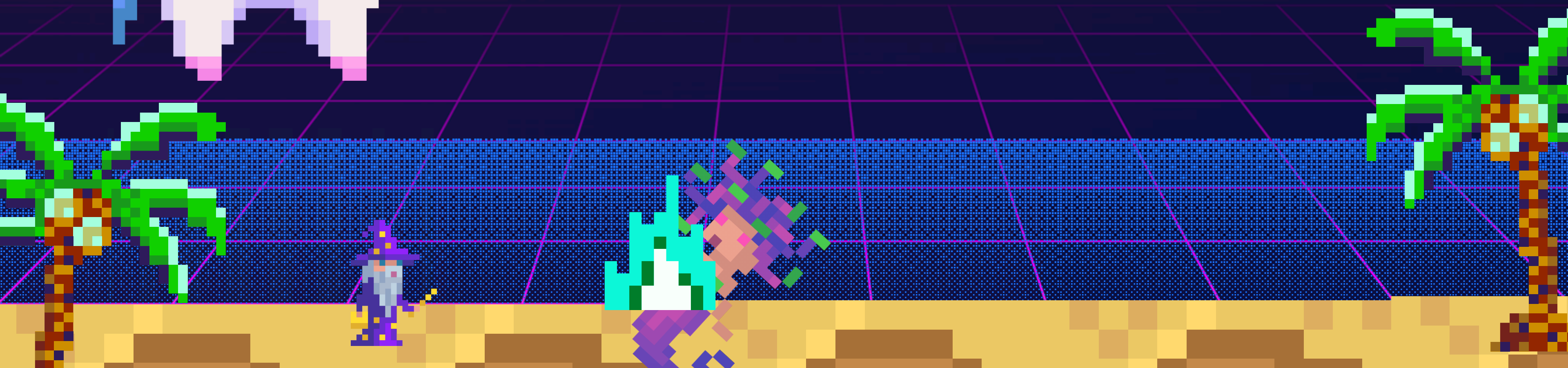


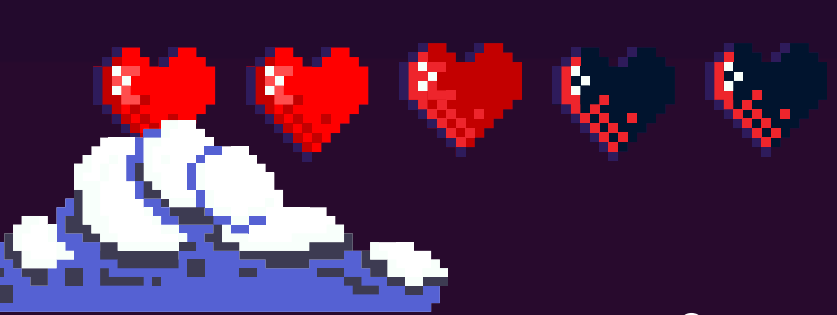
CHARACTER DEVELOPMENT



Static

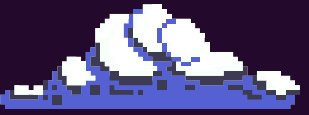
Character remains the same in attitude and behavior and does not change as a result of the plot or environment.





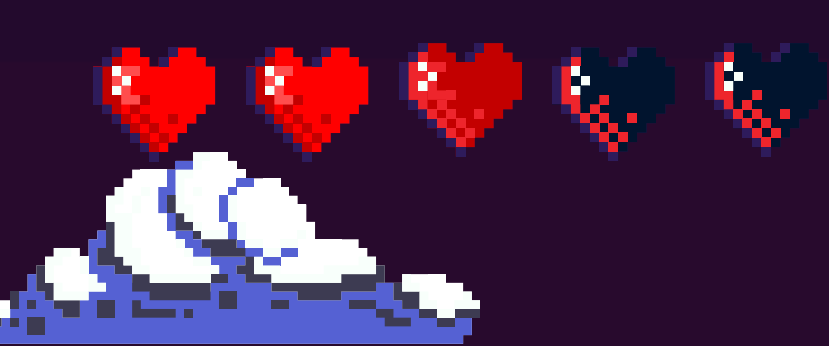
Dynamic

CHARACTER DEVELOPMENT

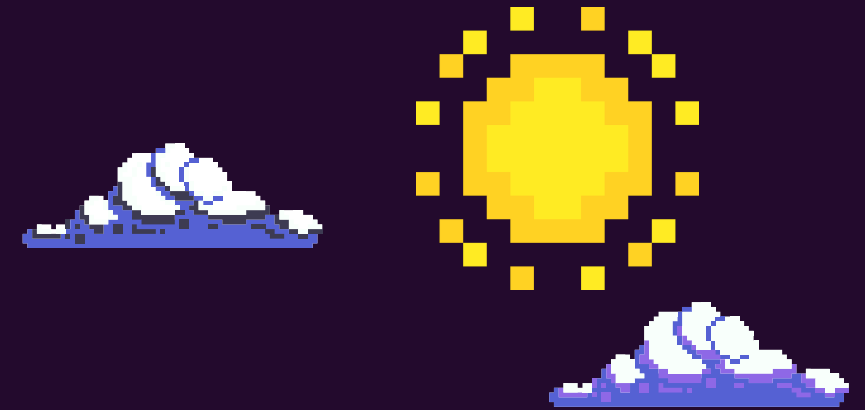


The character grows or changes their attitudes/ behaviors in response to the actions and thoughts of others (Plot). Often times, this leave the character as a better person than they were when the story started.





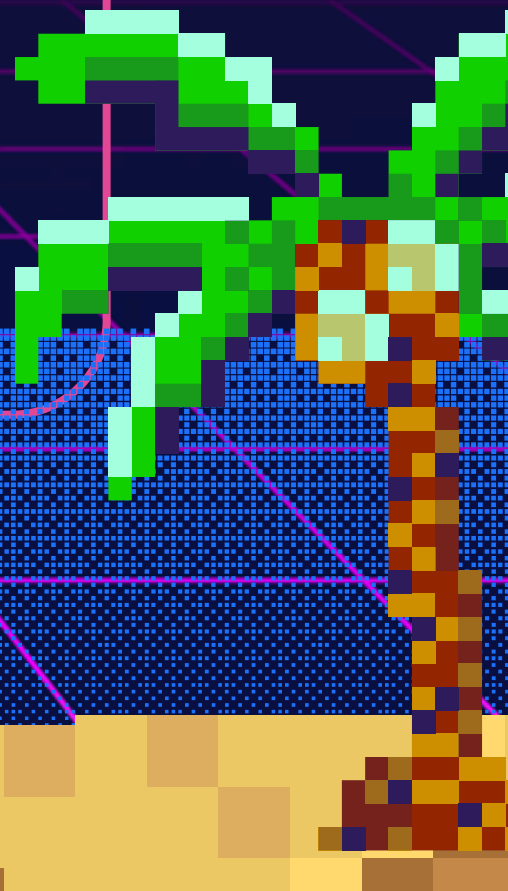
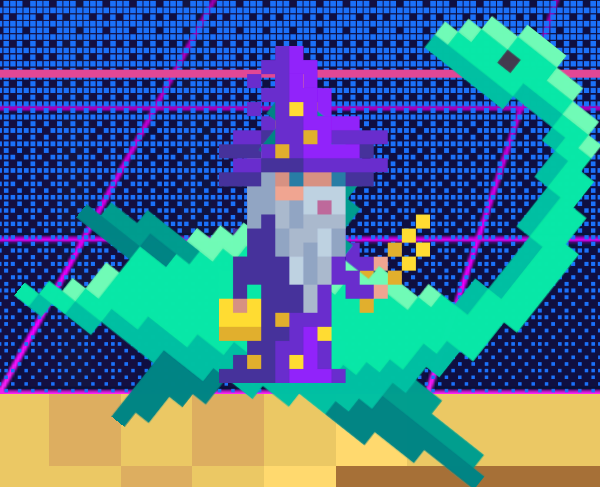
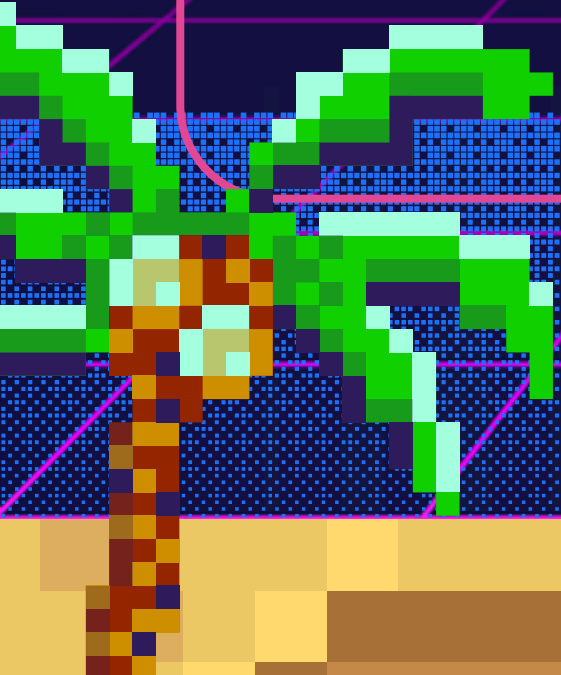
ON YOUR OWN

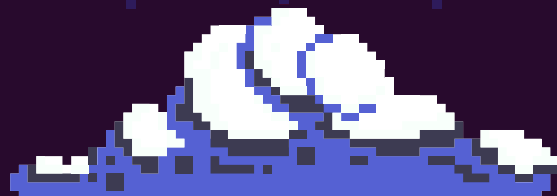
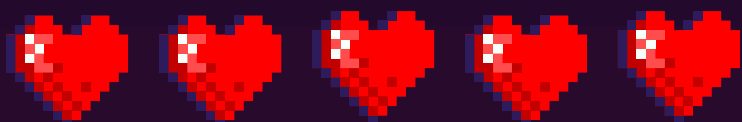


On your own, answer the questions
in the following sections from the
book:

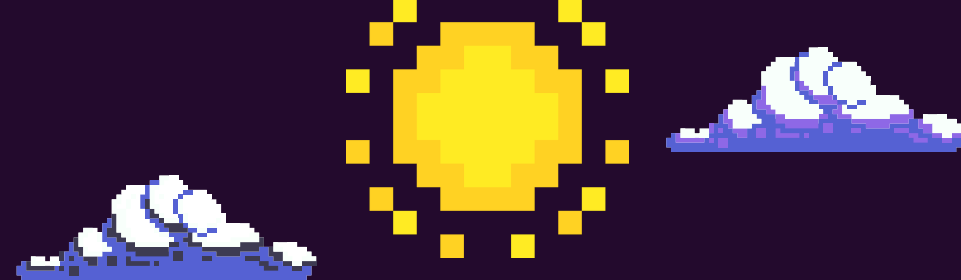
Focus on the Sentence
Appreciating Author's Craft

Record your answers in full
sentences on your stations paper.





EXIT TICKET



CONTRIBUTE TO OUR CLASS
PLAYLIST BY ADDING A SCHOOL
APPROPRIATE SONG TO THE LIST BY
THE DOOR.

